

Sailing Instructions

Amendment 1: (4.2, 11.3, and 24.1 amended Sept. 16, 2017)

Amendment 2: (19.1 amended Sept.17, 2017)

Amendment 3: (14.1 and 16.9 amended Sept.18, 2017)

1. Rules

- 1.1 The regatta will be governed by the rules as defined in the *Racing Rules of Sailing (RRS)*.
- 1.2 The SAIL CANADA prescriptions that shall apply appear in Attachment 4.
- 1.3 The Regatta Regulations of the International J/24 Class Association (IJCA) will apply.
- 1.4 Support Boats – Notwithstanding the preamble to RRS Part 4 rules, RRS 41 shall apply from the time a boat leaves her mooring for the first race of each day until she returns to her mooring after racing. If RC displays Race Signal AP over H, RRS 41 restrictions are suspended until she leaves her mooring again.
- 1.5 Bow numbers will be assigned to each boat and will be used as identification for the boat during the regatta. Bow numbers shall be applied in accordance with the instructions supplied and shall remain affixed until after a boat hauls out at the end of the regatta.
- 1.6 In accordance with RRS G3, a boat chartered or loaned for this event may carry national letters or a sail number in contravention of the class rules.
- 1.7 If there is a conflict between languages, the English text will take precedence.
- 1.8 Part 5, Section B of the RRS and RRS 41 are changed to permit Protest Arbitration as described in RRS Appendix T2, T3 and T4.
- 1.9 RRS 61.1(a) is changed so that the red flag displayed by a protesting boat shall have a hoist of not less than 150mm and a fly of not less than 200mm.
- 1.10 RRS 44.3 is changed so that code flag “I” may be used as a yellow flag and so that the flag used (either yellow or code flag “I”) shall have a hoist of not less than 150mm and a fly of not less than 200mm.
- 1.11 If there is a conflict between the Notice of Race (NOR) and these Sailing Instructions (SIs), the SIs will take precedence. This changes RRS 63.7.
- 1.12 Class rule C 2.1 is replaced with class rule J.4.3 that allows limited crew substitution.

2. Notices to Competitors:

- 2.1 Notices to competitors will be posted on the official notice board(s) located on the patio outside the Lakeshore Room of PCYC.
- 2.2 Any questions regarding these Sailing Instructions shall be submitted in writing to the Race Committee. The questions and the answers will be posted on the official notice board as soon as possible.

3. Changes to Sailing Instructions:

Any change to the Sailing Instructions will be posted before 0930 on the day it will take effect, except that any change to the schedule of races will be posted by 2100 on the day before it will take effect.

4. Signals Made Ashore: (amended September 16, 2017 changing AP)

- 4.1 Signals made ashore will be displayed at the flag pole on the southeast lawn of PCYC.
- 4.2 When flag AP is displayed ashore, '1 minute' is replaced with 'not less than 45 minutes' in the race signal AP. **This changes Race Signal 'AP'.**
- 4.3 When flag Y is displayed ashore, RRS 40 applies at all times while afloat. This changes the preamble to Part 4.

5. Schedule:

Day	Date	Time	Event/Activity
Friday	15 September	0800-1800	Measurement
Saturday	16 September	0800 - 1800	Registration/Measurement/Crew Weigh-in
Sunday	17 September	0800 – 1800	Registration/Measurement/Crew Weigh-in
Monday	18 September	0900 – 1700 0900 – 1200 1200 1400 1800 1800	Registration/ Crew Weigh-in Measurement Competitors Meeting Practice Race Opening Ceremonies All Boats Afloat
Tuesday	19 September	0800 – 0830 0900 1100 1800	Crew Weigh-in* Competitors Meeting Warning for the First Race of the Day Social Event
Wednesday	20 September	0800 – 0830 0900 1100 1800	Crew Weigh-in* Competitors Meeting Warning for the First Race of the Day Social Event
Thursday	21 September	0800 – 0830 0900 1100 1800	Crew Weigh-in* Competitors Meeting Warning for the First Race of the Day Social Event
Friday	22 September	0800 – 0830 0900 1100 1800	Crew Weigh-in* Competitors Meeting Warning for the First Race of the Day Social Event
Saturday	23 September	0800 – 0830 0900 1100 1500 1800	Crew Weigh-in* Competitors Meeting Warning for the First Race of the Day No Warning Signal after this time Closing Ceremonies

***Weigh-in on race days will be required for authorized crew substitutions.**

- 5.2 Ten races are scheduled over five consecutive days.

- 5.3 Two (2) races are scheduled per day except that no more than one race may be scheduled on the first day unless an official practice race has been held. One extra race per day may be sailed provided that the regatta does not become more than one race ahead of schedule and the change is made according to the provisions of the Sailing Instructions. If the regatta is behind schedule, extra races to a maximum of four races may be sailed in a single day.
- 6. Class Flag:**
The J/24 Class Flag (Blue insignia on a white background) shall be used in accordance with RRS 26.
- 7. Racing Areas:**
Attachment 1 shows the location of the racing areas.
- 8. Courses:**
- 8.1 Courses will be windward/leeward with 5 legs (course WA3) or four legs (course LA2).
- 8.2 The diagrams in Attachment 2 show the courses.
- 8.3 No later than the warning signal, the race committee signal boat will display the course designator, the approximate compass bearing and the distance of the first leg. The RC may also broadcast this information (See SI 27 Radio Communication). Failure to broadcast or to receive this information shall not constitute grounds for granting redress. This changes RRS 62.1(a).
- 8.4 An offset mark (designated mark 1a) will be used in conjunction with mark 1. The offset mark will be placed to the left of mark 1 (looking up wind) at approximately a right angle to the weather leg and approximately 10 – 15 boat lengths to port of mark 1.
- 8.5 Mark 2 will be a gate consisting of two marks (mark 2P and mark 2S). If the gate is not present, mark 2 shall be rounded to port. Except when there is a change of course, the gate will be positioned approximately to windward of the RC signal boat at a distance to the discretion of the RC. The gate may be laid after the starting signal.
- 8.6 No 5-leg course will be shortened to less than four legs in length, and no 4-leg course will be shortened to less than three legs in length. For purpose of this SI only, the distance between mark 1 and the offset mark will not be regarded as a leg of the course. This changes RRS 33.
- 9. Marks:**
- 9.1 Mark 1 will be a yellow inflatable mark, mark 1a will be a small yellow inflatable mark, marks 2P and 2S will be yellow inflatable marks.
- 9.2 The following marks are rounding marks: 1, 1a, 2P, 2S.
- 9.3 New marks, when used in accordance with SI 12.1 will be orange inflatable marks.
- 9.4 The starting marks will be race committee boats at each end of the starting line. In the event that the port-end line race committee boat is not in place, it will be replaced with a red inflatable mark. An inflatable mark at the stern of the starting vessel is part of the starting vessel.
- 9.5 The finishing marks will be race committee boats at each end of the finish line. In the event that the port-end line race committee boat is not in place, it will be replaced with a green inflatable mark.
- 10. Areas That Are Obstructions:**
No areas are designated as obstructions.

11. Start:

- 11.1 Races will be started using RRS26 with the warning signal made 5 minutes before the starting signal.
- 11.2 The Starting Line will be between a staff displaying an orange flag on an RC boat at the starboard end, and the course side of the port end starting mark; or,
 - 11.2.1 Between the staffs displaying orange flags on two RC boats or,
 - 11.2.2 From a staff displaying an orange flag on a RC boat at the starboard end to a staff displaying an orange flag (s) on a RC boat in the approximate center of the starting line, and thence to a staff displaying an orange flag on a RC boat at the port end.
 - 11.2.3 If a midline boat is in place in accordance with SI 11.2.2 a boat may return to the pre-start side of the line by rounding the midline boat, leaving it to port, before starting. This changes RRS 30.1.
- 11.3 **(amended September 16, 2017 changing RRS Appendices)** A boat starting later than 10 minutes after her starting signal will be scored Did Not Start without a hearing. This **changes RRS Appendix A4 and A5.**
- 11.4 Race Committee may broadcast starting information, countdowns and the bow numbers of any boats OCS on the VHF channel designated in SI 27 – Radio Communication. Failure to make or receive such broadcasts or the timing or order of transmission shall not be grounds for redress. This changes RRS 62.1(a).

12. Change of the Next Leg of the Course:

- 12.1 A course change to the next leg of the course will be signaled according to RRS 33.
- 12.2 To change the next leg of the course, the race committee will lay a new mark (or move the finishing line) and remove the original mark as soon as practicable. When in a subsequent change a new mark is replaced, it will be replaced by an original mark.
- 12.3 Except at a gate, boats shall pass between the race committee boat signaling the change of the next leg and the nearby mark, leaving the mark to port and the race committee boat to starboard. This changes RRS 28.

13. The Finish:

- 13.1 The finishing line will be between a staff displaying an orange flag on the finishing line boat and a staff displaying an orange flag on a nearby RC boat or an inflatable mark.
- 13.2 If the RC intends to start another race, it will display code flag Second Substitute (with no sound) while the boats are finishing. This changes RRS race signals.

14. Penalty System:

- 14.1 RRS 44.1 (main body) and 44.2 (turns penalties) are not in use for this regatta. RRS 44.1(a) and 44.1(b) continue to apply. The Scoring Penalty, RRS 44.3, will apply, with penalties as modified by the IJCA (table below). This changes RRS 44.2.

Action\Penalty (Adding amendment #3 to 14.1 (f) clarifying)	10%	20%	25%	30%
(a) Touching a mark	X			
(b) Breach of a part 2 rule ("right of way, room")	X			
(c) Breach of a part 2 rule ("right of way, room") within the zone		X		
(d) After Race Scoring Penalty for touching a mark		X		
(e) After Race Scoring Penalty for a breach of a part 2 rule ("right of way, room")		X		
(f) After Race Scoring Penalty for a breach of a part 2 rule ("right of way, room") within the zone.			X	
(g) If one of the above After Race Scoring penalties is taken after the protest time limit				X
(h) If taken as the result of an arbitration				X
Penalties imposed by the Race Committee or Int. Jury without a hearing: These modify RRS 63.1				
If a boat fails to check in before racing (SI 18.1) (RC)	X			
If some, but not all requirements of a properly taken Scoring Penalty are met (Jury)				X
Penalty for a breach of RRS 42 (Jury)	X			

- 14.2 RRS 44.3(c) is modified as follows: The race score for a boat that takes a Scoring Penalty shall be the score she would have received without that penalty, made worse by the penalty number. The penalty number shall be calculated by applying the scoring penalty percentage, shown in the table above, that best suits her situation against the number of boats competing and rounding to the nearest whole number (rounding 0.5 upward). However she shall not be scored worse than Did Not Finish. The scores of other boats shall not be changed by application of these penalties; therefore, two boats may receive the same score.

- 14.3 The reporting requirements of RRS 44.3(b) may be satisfied by contacting the Race Committee by VHF radio channel identified in SI 27, **Radio Communication**. Additionally, a boat accepting a Scoring Penalty under SI 14.1 (a, b or c) shall file a "Scoring Penalty Acceptance Form" available at the Race Office within the Protest Time Limit defined in SI 16.2. The Race Committee will post a list of boats that have properly accepted a Scoring Penalty on the Official Notice Board.

- 14.4 After Race Scoring Penalties, defined in SI 14.1 (d, e or f) may be taken by filing a "Scoring Penalty Acceptance Form", available from the Race Office, prior to the end of the protest time limit and prior to start of a hearing involving the incident. Filing after the protest time limit, will affect the penalty as shown in SI 14.1(g).
- 14.5 Arbitration may be used prior to the protest hearing for incidents involving the rules of Part 2 or RRS 31. Penalties accepted in arbitration shall be as shown in the table.
- 14.6 RRS Appendix P is in effect, except that P2.2, P2.3 and P2.4 shall not apply. The percentage penalty of P2.1 is modified as shown in the table.
- 14.7 Other penalties as per RRS 64.1 apply for breaking some IJCA rules. See Attachment 3.

15. Time Limits and Target Times:

- 15.1 The target time for races is 75 to 90 minutes. Failure to meet the target time will not be grounds for redress. This changes RRS 62.1(a).
- 15.2 Boats failing to finish within 20 minutes after the first boat sails the course and finishes will be scored TLE (Time Limit Expired) without a hearing. A TLE score shall be two more points than the number of boats that have finished within the time limit. This changes RRS 35, 63.1, A4, A5 and A11. The RC will lower the blue "on station for finish" flag with a long sound when the finishing window is closed.

16. Protests and Requests for Redress: (adding amendment 16.9 - Sept.18/17, concerning notice of protest)

- 16.1 Protest forms are available at the race office. Protests and requests for redress or reopening shall be delivered there within the appropriate time limit.
- 16.2 The protest time limit is 90 minutes after the last boat has finished the last race of the day or from the time the race committee signals no more racing for the day, whichever is later.
- 16.3 The race committee will post a list of penalties being assigned by the race committee or jury (including RRS 42 violations under Appendix P) prior to the end of the protest time limit. The deadline for requests for redress based on these assigned penalties will be either 30 minutes after posting or the protest time limit, whichever is later.
- 16.4 Notices will be posted no later than 30 minutes after the protest time limit to inform competitors of hearings in which they are parties or named as witnesses. Hearings will be held in the protest room, located at the location identified by the race office.
- 16.5 Breaches of instructions 11.3, 18.1, 18.2, 21, 23, 24.1, 25, 26, and 27 will not be grounds for a protest by a boat. This changes rule 60.1(a). Penalties for these breaches may be less than disqualification if the jury so decides.
- 16.6 On the last scheduled day of racing, a request for reopening a hearing shall be delivered:
 - (a) within the protest time limit if the requesting party was informed of the decision on the previous day;
 - (b) no later than 30 minutes after the requesting party was informed of the decision on that day. This changes RRS 66.

- 16.7 On the last scheduled day of racing, a request for redress based on a protest committee decision shall be delivered no later than 30 minutes after the decision was posted. This changes RRS 62.2.
- 16.8 Decisions of the jury will be final as provided in RRS 70.5.
- 16.9 Notices of protest by the Race Committee, Technical Committee or Protest Committee will be posted to inform boats under RRS 61.1 (b).**
- 17. Scoring:**
- 17.1 Four races are required to be completed to constitute a championship.
- 17.2 When fewer than five races have been completed, a boat's series score will be the total of her race scores. When five or more races have been completed, a boat's series score will be the total of her race scores, excluding her worst score. This modifies Appendix A.
- 18. Safety Regulations:**
- 18.1 Before the warning signal of the first race each day, each boat shall sail on starboard tack past the stern of the race committee boat and hail her bow number and receive an acknowledgement from the race committee.
- 18.2 A boat that retires from a race or does not intend to compete in a race or returns to the racing area shall notify the race committee as soon as possible.
- 19. Replacement of Crew or Equipment:**
- 19.1 **(Amended September 17, 2017 correcting class rule number)** There shall be no crew replacement except as allowed by class rule **J.4.3**, as noted in SI 1.12.
- 19.2 Even if replacement/substitution is allowed, the number of crew shall not change during the regatta.
- 19.3 Substitution of damaged or lost equipment will not be allowed unless authorized by the technical committee. Requests for substitution shall be made to the technical committee at the first reasonable opportunity. Substitution of spinnaker poles or rudders with spares that have been measured for this event and are carried aboard may be done without notification.
- 20. Equipment and Measurement Checks:**
- 20.1 A boat or equipment may be inspected at any time for compliance with the class rules and the sailing instructions. On the water, a boat may be instructed by a technical committee equipment inspector to proceed immediately to a designated area for inspection.
- 21. Event Advertising and Bow Numbers:**
- 21.1 Boats shall display bow numbers that are supplied by the organizing authority. Such bow numbers shall be installed according to the instructions supplied with them and shall remain in place for the duration of the regatta.
- 21.2 Boats shall display event advertising that is supplied by the organizing authority. Such advertising shall be installed according to the instructions supplied with them and shall remain in place for the duration of the regatta.

22. Official Boats:

- 22.1 Official Boats shall be marked as follows: Race committee (RC flag), Jury (Jury flag), Press (Press flag), VIP boats (VIP flag), Photo boats (Photo flag), Measurement (Measurement flag)

23. Support Boats:

- 23.1 Support boats shall comply with 1.4.
- 23.2 Support boats shall register during scheduled registration, declaring to which boat or boats they are attached.
- 23.3 Support boats shall remain no less than 150m from the race course from the Preparatory signal until all boats have finished or retired or the race committee has signaled a postponement, general recall or abandonment.
- 23.4 Support boat drivers shall have valid third-party liability insurance in the same amount as is required of each participating boat and provide proof of that insurance at registration.

24. Trash Handling: (amended September 16, 2017)

- 24.1 Competitors shall not **intentionally** dispose of trash in the water (See RRS 55). Trash shall be held for proper disposal ashore or may be placed on official boats if such facilities are available.

25. Afloat and Haul-out Restrictions:

- 25.1 Boats shall be afloat by September 18 at 1800 hours and shall not be hauled out during the regatta except with, and according to the terms of prior written permission of the technical committee. This includes rudders.

26. Diving Equipment, Plastic Pools and Other Prohibited Actions:

- 26.1 Underwater breathing apparatus and plastic pools or their equivalent shall not be used between the time the boat is afloat and the end of the regatta. The hull may be cleaned at any time by swimming or keelhauling using ropes, cloth or other equipment designed for that use.
- 26.2 Careening by any means for the purpose of cleaning or inspecting the hull is prohibited during the regatta.
- 26.3 Dehumidifiers shall not be used while moored at Port Credit Yacht Club.

27. Radio Communications:

- 27.1 Except in an emergency, a boat shall not make voice or data transmissions and shall not receive voice or data communication that is not available to all boats. This shall apply from the time she leaves her mooring for the first race of the day until racing for the day is complete.

- 27.2 The race committee may choose to make VHF radio communications to the fleet on channel 71 (International). It is strongly encouraged that each boat has a VHF radio on board capable of receiving these communications.

28. Prizes:

- 28.1 Prizes will be awarded to the top ten boats.
- 28.2 There will be assorted daily awards.
- 28.3 There will be a prize for the top master skipper (age 55+ at date of the event).
- 28.4 There will be a prize awarded to the top youth entry in which the entire crew is under the age of 25 years at the start of the regatta.
- 28.5 There will be a prize awarded to the top women's entry in which the entire crew is comprised of women.

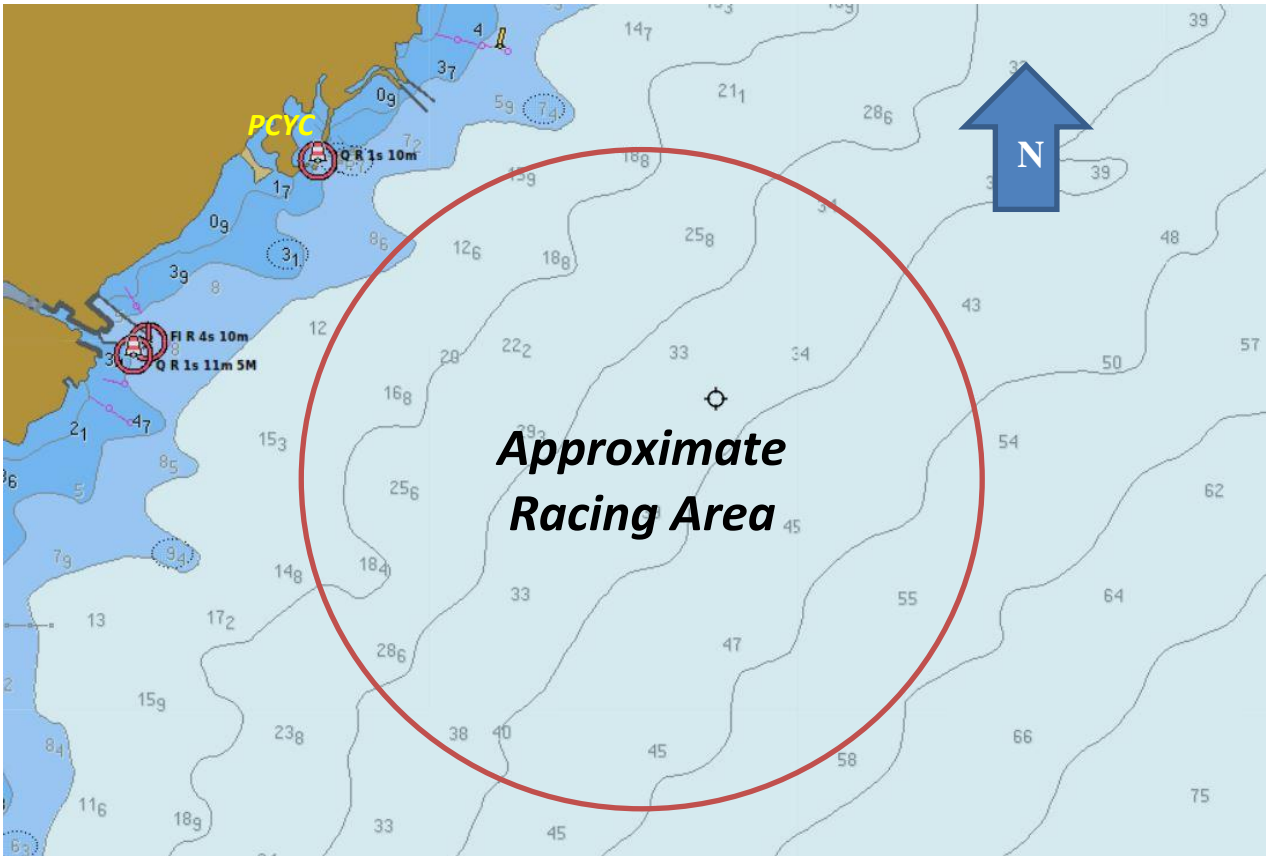
29. Disclaimer of Liability:

- 29.1 Competitors participate in the regatta entirely at their own risk. See RRS 4, Decision to Race. The organizing authority will not accept any liability for material damage or personal injury or death sustained in conjunction with or prior to, during or after the regatta.
- 29.2 All competitors will be required to sign a Competitor Liability Waiver form to be provided in the registration package.

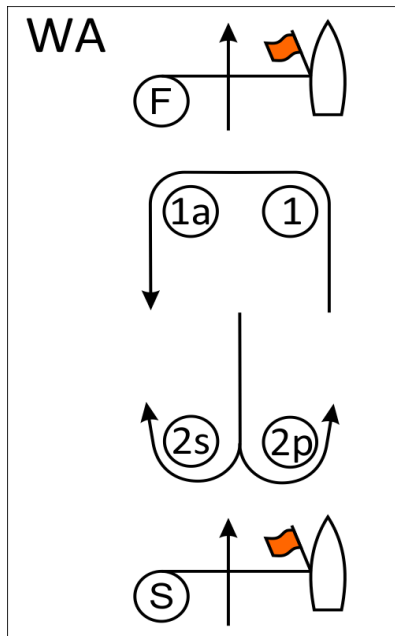
30. Insurance:

- 30.1 Proof of current marine liability insurance with a minimum value of \$1,000,000 (CAN) per occurrence; or \$300,000 (US) per occurrence.

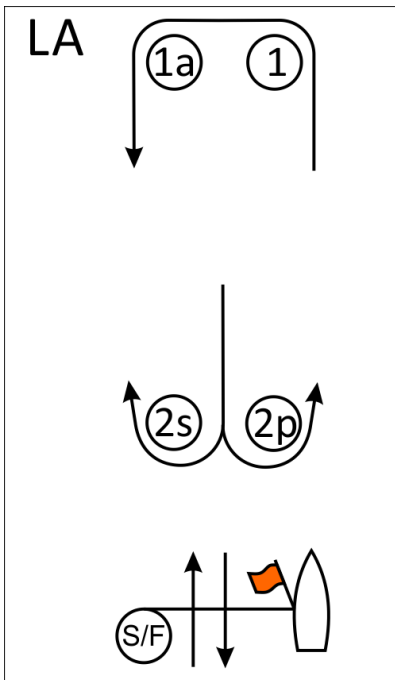
ATTACHMENT 1 - RACING AREA LOCATION



ATTACHMENT 2 – COURSE DIAGRAMS



Course WA – Windward/Leeward with offset Mark, Windward Finish	
Signal	Mark Rounding Order
WA2	Start – 1 – 1a – 2s/2p – Finish
WA3	Start – 1 – 1a – 2s/2p – 1 – 1a – 2s/2p – Finish
WA4	Start – 1 – 1a – 2s/2p – 1 – 1a – 2s/2p – 1 – 1a – 2s/2p – Finish



Course LA – Windward/Leeward with offset Mark, Leeward Finish	
Signal	Mark Rounding Order
LA2	Start – 1 – 1a – 2s/2p – 1 – 1a – Finish
LA3	Start – 1 – 1a – 2s/2p – 1 – 1a – 2s/2p – 1 – 1a – Finish
LA4	Start – 1 – 1a – 2s/2p – 1 – 1a – 2s/2p – 1 – 1a – 2s/2p – 1 – 1a – Finish

NOTE: If the gate (mark 2p and mark 2s) is not present, mark 2 will be set in place of marks 2p and 2s, and shall be rounded to port. 2S/2P in the rounding sequence for the courses is replaced by 2.

ATTACHMENT 3 -

Alternative Penalties for Breaking Some Class Rules

The following penalties for a boat that breaks these listed class rules would be in place of disqualification. All of these scoring penalties shall be calculated according to RRS 44.3(c).

Class Rule	Infringement	Scoring Penalty
B.3	Complete Measurement Certificate, including the Inventory of Required and Optional Equipment is not on board	20%
C.4	Advertising does not conform to World Sailing (Reg 20) standards	20%
C.9.4 & C.9.5	Mainsail is set outside of the limit marks	20%
C.5.1(a)(1)	Bailing bucket (9 liter min. with lanyard) is not on board	20%
C.7.2(a)(9)	Approved compass device is not present or not functional	20%
C.5.1(a)(4)	Throwable lifesaving device with attached sea anchor is not on deck, ready for use	20%
C.5.1(a)(5)	First aid kit is not on board	20%
C.5.1(b)(1) C.5.1(a)(2) C.5.2(a)(10)	Any of anchors(s), outboard motor/engine, battery or engine fuel container(s) are not in their proper location and secured against movement	20%
C.7.3(a)(11)	Elastic (shock) cord is used in the standing or running rigging where it is not specifically allowed	20%
C.5.3	Stowage of equipment other than unbagged sails on the cabin sole	20%
	Removal of the rudder from the water when the Sailing Instructions stipulate that the boat shall remain afloat for the duration of the regatta	20%

If a boat receives one of the above penalties, the protest decision shall include whether the same penalty will be applied to other races in which the same infringement likely occurred.

Attachment 4

Sail Canada Prescriptions 2017–2020

Effective 1 January 2017

Sail Canada prescribes:

Rule 61.2 – Protest Contents

Sail Canada prescribes that no fee shall be charged for delivering a protest or a request for redress.

Rule 67 – Damages

Sail Canada prescribes that a boat that has been found by a protest committee to have broken a rule and caused damage shall be considered at fault for the purposes of rule 67.

Rule 91(b) – Protest Committee

Sail Canada prescribes that a request for an international jury formed under rule N1.7 comprised of only three members requires written approval be obtained from Sail Canada before making the request to World Sailing.